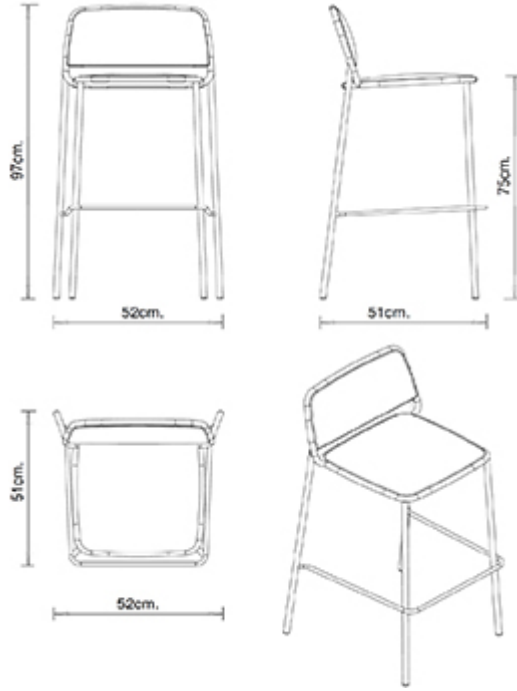
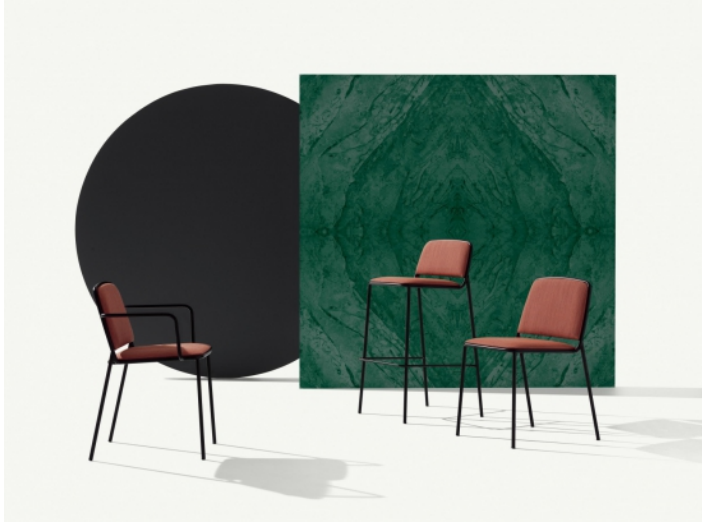


Ring 672

RING COLLECTION:
Ring 670, Ring 671, Ring 672,



Barstool with steel frame, 4 legs. Upholstered seat and back.

STACKABLE

4

WEIGHT

7,4 Kg

PACK

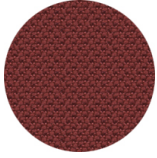
0,40 m³

PIECES PER BOX

2

FINISHES SEATING

TE FABRICS



Alba
+ 8 colors



Aragon
+ 14 colors



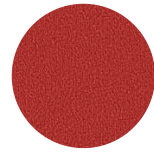
Melva
+ 5 colors



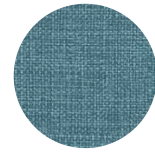
Fortis + 8 colori



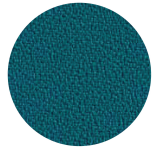
Roccia
+ 8 colors



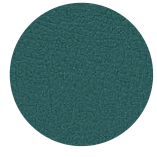
Amsterdam
+ 8 colors



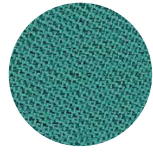
Medley Gabriel
+ 15 colors



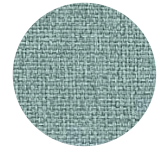
Mirage
+ 8 colors



Inca
+ 14 colors



Chili Gabriel
+ 8 colors



Convert
+ 7 colors



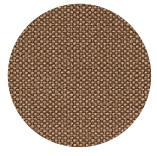
Fenice
+ 8 colors



Mood Gabriel
+ 8 colors



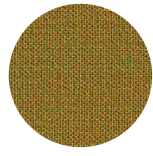
Valencia
+ 14 colors



Reviva Hero
+ 10 colors
☀



Fabthirty Rubelli
+ 8 colors
☀



Remix 3 Kvadrat
+ 15 colors



Ocean Mastrotto
+ 15 colors

NOTE

Resources

3ds



| dwg



FRAMES

AC STEEL



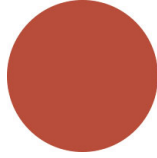
CR Chrome



NCS S4000-N VR White
aluminium



NCS S9000-N VR Jet
black



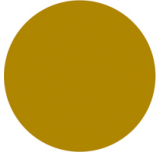
NCS S3060-Y80R
Coral red



VR Rough metallic
bronze



NCS S9000-N VR Matt
Jet Black



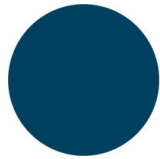
NCS S3060-Y Curry



NCS S7020-G50Y
Olive green



NCS S4050-B40G
Water blue



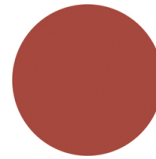
NCS S6030-B
Capri blue



NCS S8005-Y20R
Brown



NCS s0502-b VR Traffic
white



NCS S4040-R
Marsala



VR Pewter



NCS S7502-B VR
Anthracite grey



NCS S0500-N VR Pure
white

CERTIFICATIONS

- > UNI/EN 16139:2013 - Par.4 Sicurezza. 4.3 Stabilità (03/10/16)
- > UNI/EN 16139:2013 - Par.4.1. Generale. 4.2 Cesoiamento e schiacciamento (03/10/16)
- > UNI/EN 16139:2013 - Par.6. Prova 1. Carico statico sedile e schienale: 2-Uso estremo (03/10/16)
- > UNI/EN 16139:2013 - Par.6. Prova 11. Prova di durabilità dell'appoggiapiedi: 2-Uso estremo (04/11/16)
- > UNI/EN 16139:2013 - Par.6. Prova 12. Prova di carico statico delle gambe anteriori: 2-Uso estremo (04/11/16)
- > UNI/EN 16139:2013 - Par.6. Prova 13. Prova di carico statico delle gambe laterali: 2-Uso estremo (04/11/16)
- > UNI/EN 16139:2013 - Par.6. Prova 14. Prova di urto sul sedile: 2-Uso estremo (04/11/16)
- > UNI/EN 16139:2013 - Par.6. Prova 15. Prova di urto sullo schienale: 2-Uso estremo (04/11/16)
- > UNI/EN 16139:2013 - Par.6. Prova 2. Carico statico sul fronte anteriore: 2-Uso estremo (03/10/16)
- > UNI/EN 16139:2013 - Par.6. Prova 3. Carico verticale sullo schienale: 2-Uso estremo (03/10/16)
- > UNI/EN 16139:2013 - Par.6. Prova 4. Carico statico sul poggiapiedi/ poggiamambe: 2-Uso estremo (03/10/16)
- > UNI/EN 16139:2013 - Par.6. Prova 8. Prova di fatica sedile e schienale: 2-Uso estremo (24/10/16)
- > UNI/EN 16139:2013 - Par.6. Prova 9. Prova di fatica del bordo anteriore: 2-Uso estremo (31/10/16)

USES

coffee & restaurants, hotels, retail,