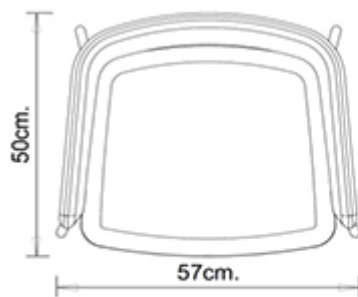
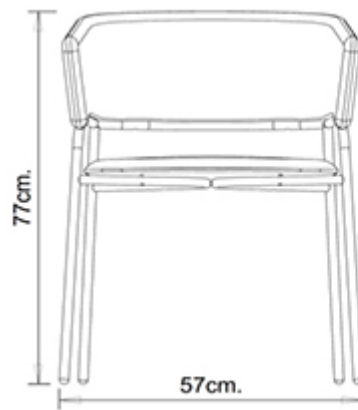


Play 538

PLAY COLLECTION:
Play 538,



Armchair with steel frame, 4 legs. Upholstered seat and back.

WEIGHT

7,7 Kg

PACK

0,26 m³

PIECES PER BOX

1

FINISHES SEATING

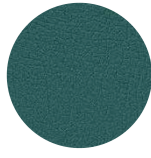
TE FABRICS



Fortis + 8 colori



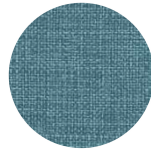
Melva
+ 14 colori



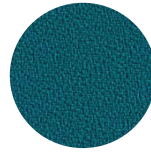
Inca
+ 14 colori



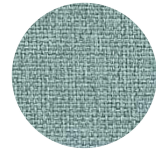
Amsterdam
+ 8 colori



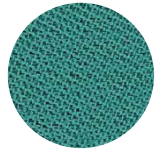
Medley Gabriel
+ 15 colori



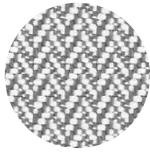
Mirage
+ 8 colori



Convert
+ 8 colori



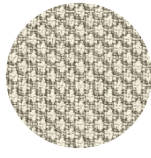
Chili Gabriel
+ 8 colori



in&out
+ 15 colori



Fenice
+ 8 colori



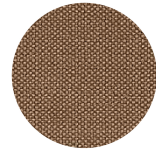
Rondo Gabriel
+ 8 colori



Valencia
+ 14 colori



Mood Gabriel
+ 8 colori



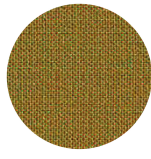
Reviva
+ 8 colori



Fabthirty Rubelli
+ 8 colori



Ocean Mastrotto
+ 15 colori



Remix 3 Kvadrat
+ 15 colori

FRAMES

AC STEEL



NCS s0502-b VR Traffic white
☀️



VR Pewter
☀️



NCS S0500-N VR Pure white
☀️



NCS S4000-N VR White aluminium
☀️



CR Chrome



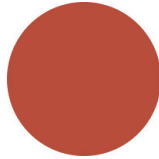
NCS S7502-B VR Anthracite grey
☀️



NCS S9000-N VR Jet black
☀️



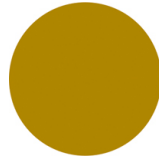
NCS S9000-N VR Matt Jet Black
☀️



NCS S3060-Y80R Coral red
☀️



VR Rough metallic bronze
☀️



NCS S3060-Y Curry
☀️



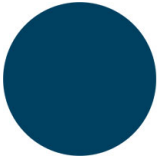
NCS S4050-B40G Water blue
☀️



NCS S7020-G50Y Olive green
☀️



NCS S8005-Y20R Brown
☀️



NCS S6030-B Capri blue
☀️

CERTIFICATIONS

- > UNI/EN 16139:2013 - Par.4.1. Generale. 4.2 Cesoiamento (24/04/15)
- > UNI/EN 16139:2013 - Par.4.3. Stabilità (24/04/15)
- > UNI/EN 16139:2013 - Prova 1. Carico statico sedile e schienale: 2-Uso estremo (24/04/15)
- > UNI/EN 16139:2013 - Prova 10. Prova di fatica dei braccioli: 2-Uso estremo (24/04/15)
- > UNI/EN 16139:2013 - Prova 12. Carico statico gambe anteriori: 2-Uso estremo (24/04/15)
- > UNI/EN 16139:2013 - Prova 13. Carico statico gambe laterali: 1-Uso generale (14/05/15)
- > UNI/EN 16139:2013 - Prova 2. Carico statico sul fronte anteriore: 2-Uso estremo (24/04/15)
- > UNI/EN 16139:2013 - Prova 3. Carico verticale sullo schienale: 2-Uso estremo (24/04/15)
- > UNI/EN 16139:2013 - Prova 5. Carico statico laterale sui braccioli: 2-Uso estremo (24/04/15)
- > UNI/EN 16139:2013 - Prova 6. Carico statico verticale verso il basso sui braccioli: 2-Uso estremo (24/04/15)
- > UNI/EN 16139:2013 - Prova 8. Prova di fatica sedile e schienale: 2-Uso estremo (24/04/15)
- > UNI/EN 16139:2013 - Prova 9. Prova di fatica sul bordo anteriore: 2-Uso estremo (24/04/15)

USES

coffee & restaurants, hotels, educational, entertainment, travel, office and waiting areas, retail, health care,