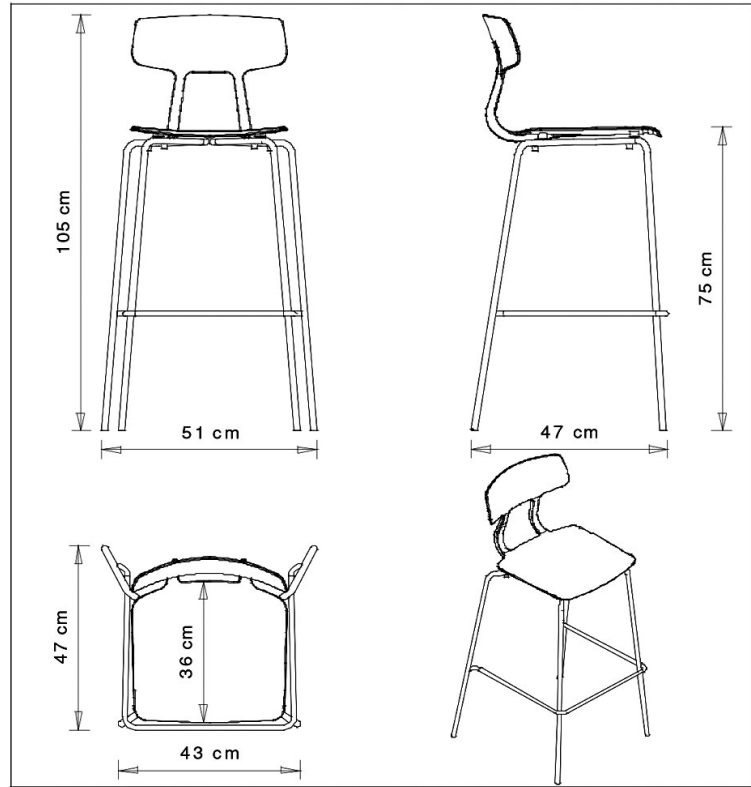


## Snap 1102

### SNAP COLLECTION:

Snap 1100, Snap 1100n, Snap 1101,  
Snap 1101n, Snap 1102, Snap 1102b,  
Snap 1103, Snap 1105, Snap 1105N,  
Snap 1106, Snap 1106N, Snap 1108,  
Snap 1109, Snap 1108N, Snap 1109N,



Barstool with steel frame, 4 legs. Polypropylene shell.

[Watch the video](#)

#### STACKABLE

4

#### WEIGHT

5,3 Kg

#### PACK

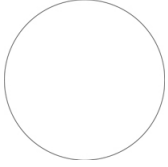
0,40 m<sup>3</sup>

#### PIECES PER BOX

4

## FINISHES SEATING

### PP POLYPROPYLENE



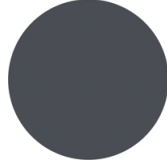
NCS S0502-B  
Traffic white



NCS S 2005-G90Y  
Hemp white



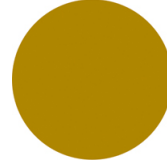
NCS S4005-B20G  
Squirrel grey  
(available while stocks last)



NCS S7502-B  
Anthracite grey  
(Available while stocks last)



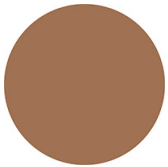
NCS S9000-N  
Jet black



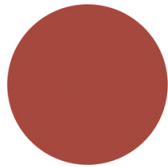
NCS S3060-Y Curry



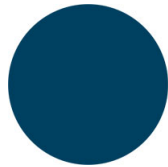
NCS S4050-B40G  
Water blue  
(Available while stocks last)



NCS S 5030-Y70R  
Terracotta



NCS S4040-R  
Marsala  
(Available while stocks last)



NCS S6030-B  
Capri blue



NCS S3010-G50Y  
Pistachio  
(available while stocks last)



NCS S7020-G50Y  
Olive green



## NOTE

### Resources

3ds



dwg



### Notes

Shells in **olive green** and **marsala** are made of **100% recycled polypropylene** from industrial waste.

## FRAMES

### AC STEEL



NCS s0502-b VR Traffic  
white  
☀️



NCS S0500-N VR Pure  
white  
☀️



VR Pewter  
☀️



NCS S4000-N VR  
White aluminium  
☀️



RAL 7016 Anthracite  
grey  
☀️



NCS S9000-N VR Jet  
black  
☀️



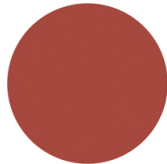
NCS S9000-N VR  
Matt Jet Black  
☀️



NCS S8005-Y20R  
Brown  
☀️



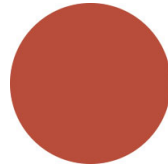
VR Rough metallic  
bronze  
☀️



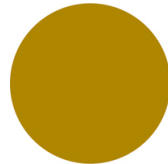
NCS S4040-R  
Marsala  
☀️



CR Chrome



NCS S3060-Y80R  
Coral red  
☀️



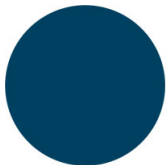
NCS S3060-Y Curry  
☀️



NCS S7020-G50Y  
Olive green  
☀️



NCS S4050-B40G  
Water blue  
☀️



NCS S6030-B  
Capri blue  
☀️

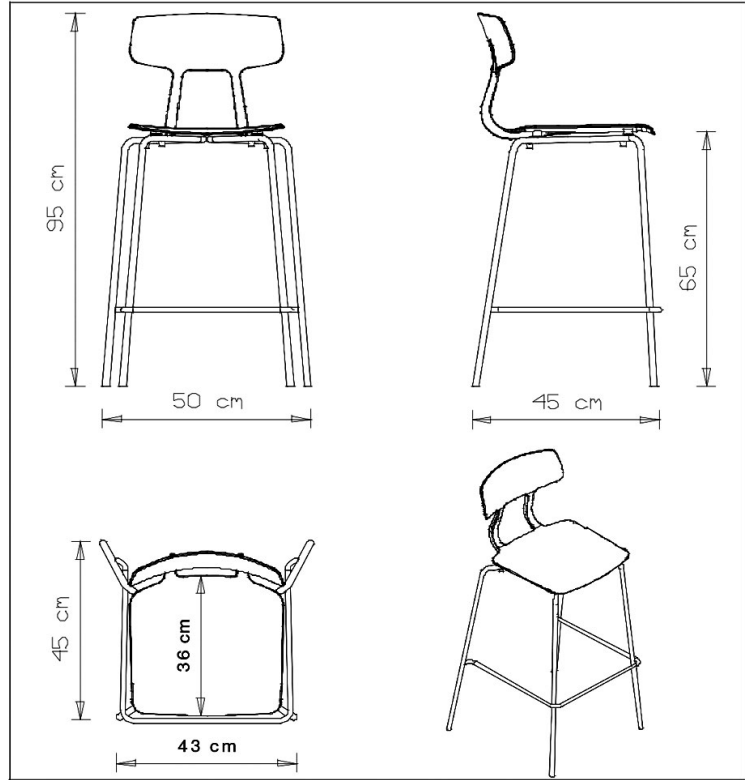
## USES

coffee & restaurants, entertainment, travel, outdoor,

## Snap 1102b

### SNAP COLLECTION:

Snap 1100, Snap 1100n, Snap 1101,  
Snap 1101n, Snap 1102, Snap 1102b,  
Snap 1103, Snap 1105, Snap 1105N,  
Snap 1106, Snap 1106N, Snap 1108,  
Snap 1109, Snap 1108N, Snap 1109N,



Barstool with steel frame, 4 legs.  
Polypropylene shell. H 65 cm.

#### STACKABLE

4

#### WEIGHT

5,2 Kg

#### PACK

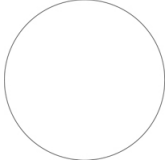
0,37 m<sup>3</sup>

#### PIECES PER BOX

4

## FINISHES SEATING

### PP POLYPROPYLENE



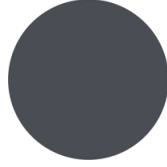
NCS S0502-B  
Traffic white



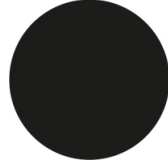
NCS S 2005-G90Y  
Hemp white



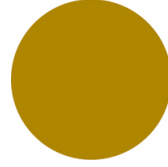
NCS S4005-B20G  
Squirrel grey  
(available while stocks last)



NCS S7502-B  
Anthracite grey  
(Available while stocks last)



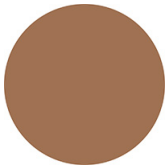
NCS S9000-N  
Jet black



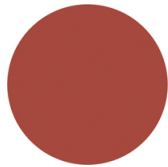
NCS S3060-Y Curry



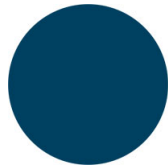
NCS S4050-B40G  
Water blue  
(Available while stocks last)



NCS S 5030-Y70R  
Terracotta



NCS S4040-R  
Marsala  
(Available while stocks last)



NCS S6030-B  
Capri blue



NCS S3010-G50Y  
Pistachio  
(available while stocks last)



NCS S7020-G50Y  
Olive green



## NOTE

### Resources

3ds



dwg



### Notes

Shells in **olive green** and **marsala** are made of **100% recycled polypropylene** from industrial waste.

## FRAMES

### AC STEEL



NCS s0502-b VR Traffic  
white  
☀



NCS S0500-N VR Pure  
white  
☀



VR Pewter  
☀



NCS S4000-N VR  
White aluminium  
☀



RAL 7016 Anthracite  
grey  
☀



NCS S9000-N VR Jet  
black  
☀



NCS S9000-N VR  
Matt Jet Black  
☀



NCS S8005-Y20R  
Brown  
☀



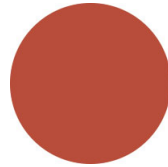
VR Rough metallic  
bronze  
☀



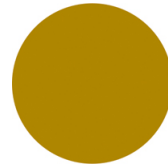
NCS S4040-R  
Marsala  
☀



CR Chrome



NCS S3060-Y80R  
Coral red  
☀



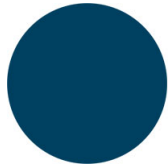
NCS S3060-Y Curry  
☀



NCS S7020-G50Y  
Olive green  
☀



NCS S4050-B40G  
Water blue  
☀



NCS S6030-B  
Capri blue  
☀

## USES

coffee & restaurants, entertainment, travel, outdoor,